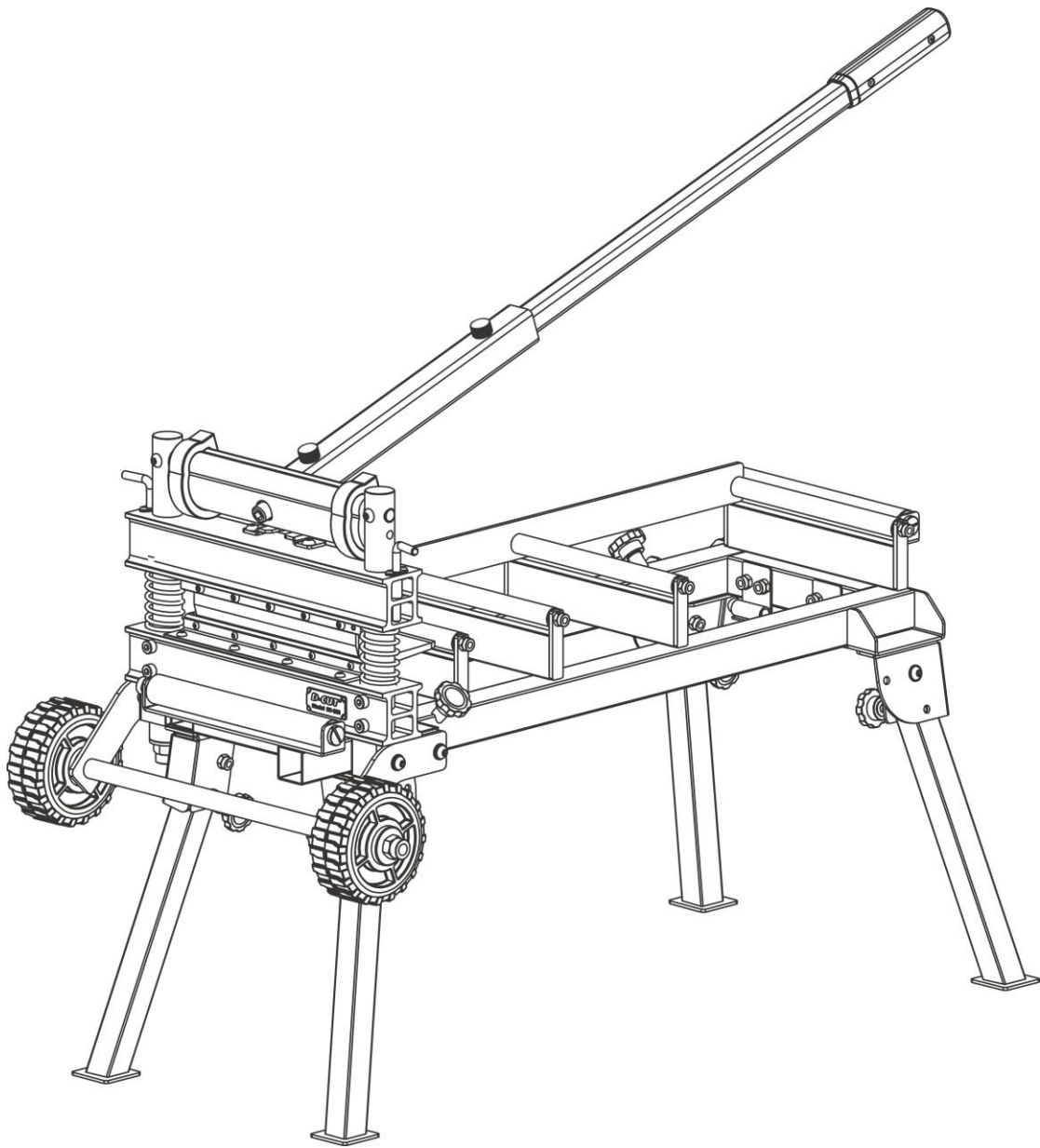


D-CUT[®]

OPERATION MANUAL

D-CUT Cement Siding Cutter SC-230

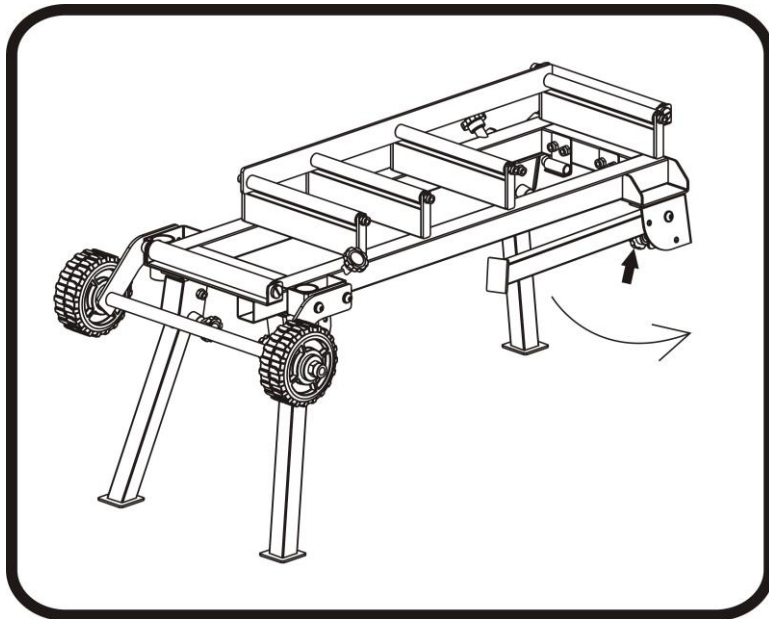




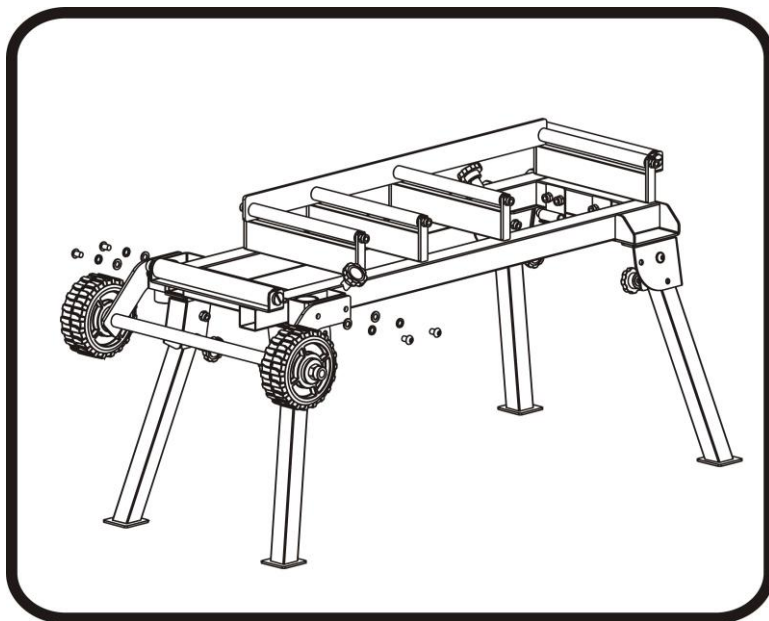
WARNING: FAILURE TO FOLLOW THESE RULES MAY RESULT IN SERIOUS INJURY! USING THIS MACHINE WITH RESPECT AND CAUTION WILL CONSIDERABLY LESSEN THE POSSIBILITY OF PERSONAL INJURY.

SAFETY RULES FOR THE FLOORING CUTTER

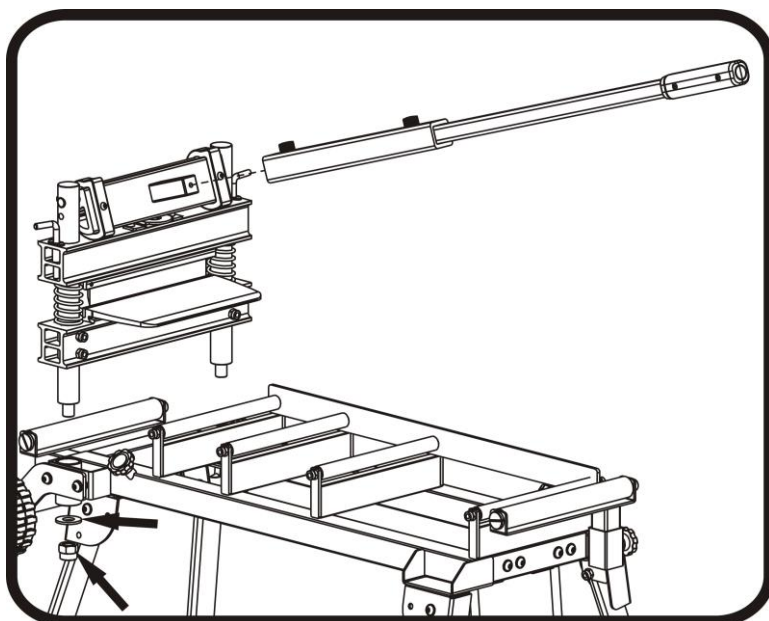
- 1. READ AND UNDERSTAND THIS INSTRUCTION MANUAL BEFORE OPERATING THE D-Cut MULTI-FLOORING CUTTERS.**
2. If you are not thoroughly familiar with the operation of D-Cut Cement Siding Cutter, obtain advice from a qualified instructor or call 630-916-9100 USA
3. Stay alert. Do not operate while under the influence of drugs, alcohol, or medication.
4. Always wear safety approved eye protection with side shields(ANSI Z87.1)
5. Keep work area free of debris.
6. Keep children and unauthorized persons away from the D-Cut Cement Siding Cutter and work area.
7. Make sure tool is secure. Operate only on a firm substrate or solid stand.
8. Use the right tool. Do not force the D-Cut Cement Siding Cutter or use it for a job for which it was not designed; use only on approved materials.
9. Keep the blade sharp. A dull blade will not perform properly.
10. Always keep hands away from blade while operating or carrying the cutter.
11. Do not alter or misuse this tool. The D-Cut Cement Siding Cutter is precision built; modifications not specified in this manual may result in a dangerous and unsafe environment.
12. Maintain the D-Cut Cement Siding Cutter with care. Keep Blade sharp and clean. Follow instructions for changing accessories.
13. Use only recommended accessories. The use of improper accessories may be hazardous and cause injuries.
14. Never leave the D-Cut Cement Siding Cutter unattended. Keep the cutting head in a close position with lock pins when the cutter is not in use.



Installation of the Cutter(1)
Pull 4 legs down to make the cutter base stand up as shown.

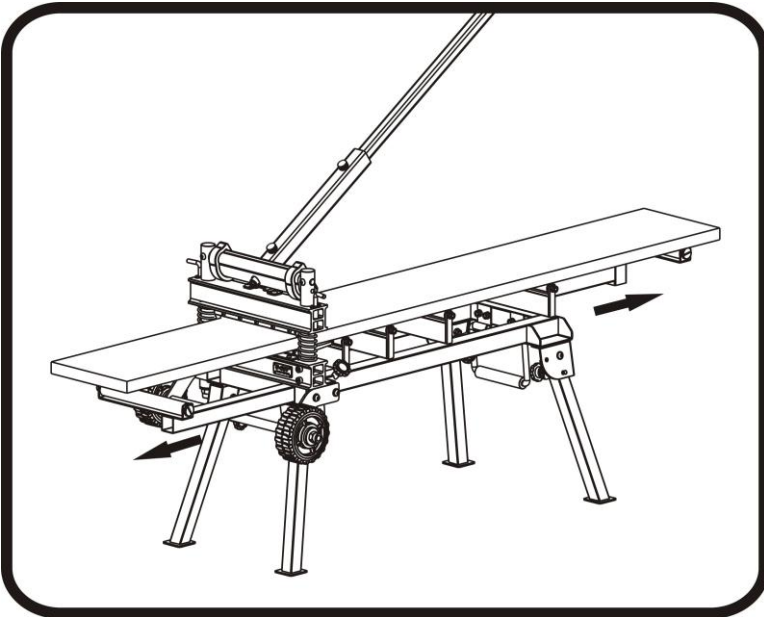


Installation of the Cutter(2)
Install the wheels assembly to the base as shown.



Installation of the Cutter(3)
Install the cutter head to the base as shown.

Warning: Do not put your fingers against the sharp edge of the blade at any time.

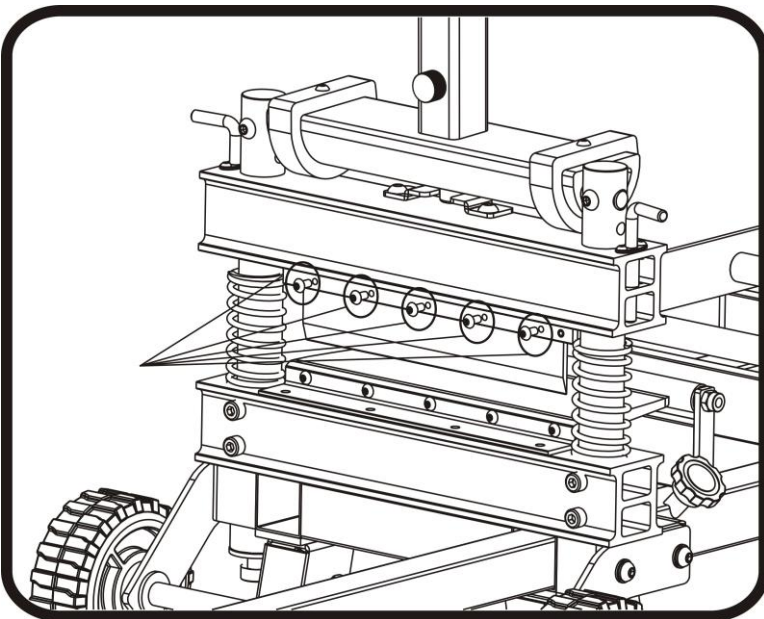


Straight Cut

Insert the siding between the cutting blade and the base, pull out the extension bracket, then flush the siding with the guide bar on one side of the rollers, hold the siding and pull handle down to complete a cut.

Note: the flat side of the blade should face the working table.

Warning: Do not put your fingers against the sharp edge of the blade at any time.

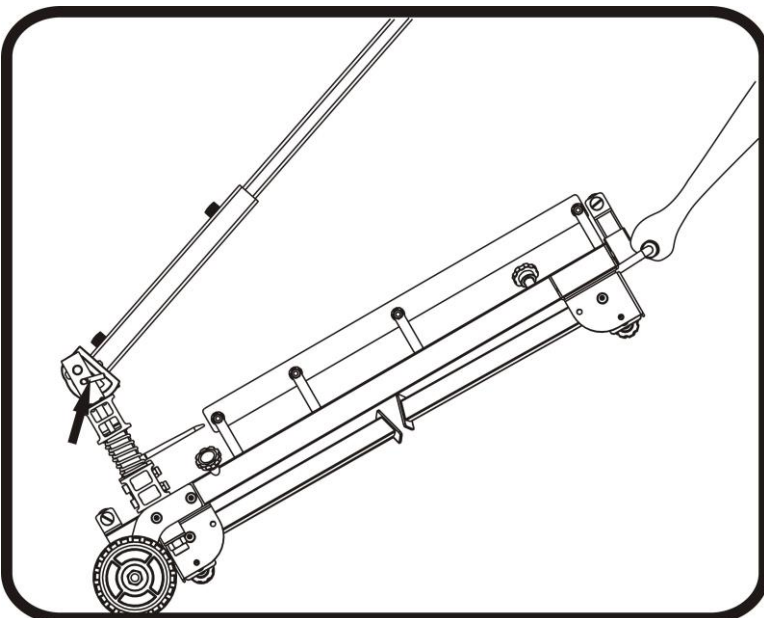


Changing the Blade

Use provided Allen wrench to remove the five screws, then carefully move the blade out of the small blade holder.

Note: the flat side of the blade should face the working table.

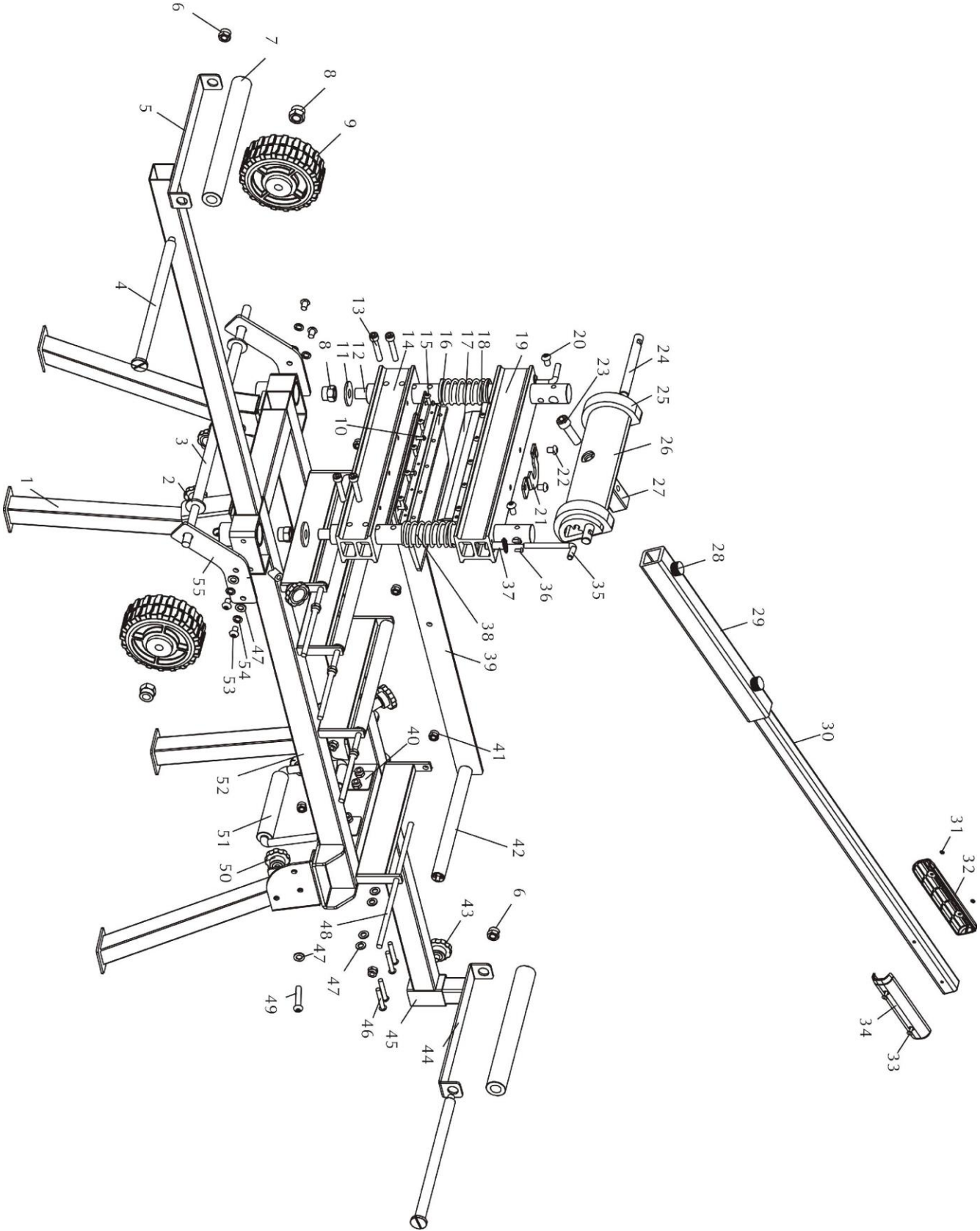
Warning: Do not put your fingers against the sharp edge of the blade at any time.



Transportation

Folding 4 legs as shown and use the lock pins firmly locked the cutting head, then carry the handle as shown.

Explosive View





Explosive View

	Parts	Q'ty		Parts	Q'ty
1	Supporting Leg	4	29	Handle A	1
2	Washer	2	30	Handle B	1
3	Wheel Shaft	1	31	Nut M4	2
4	Extension Wheel Shaft	2	32	Right ABS Handle	1
5	Front Extension Bracket	1	33	Screw M4× 30	2
6	Locker Nut M12	2	34	Left ABS Handle	1
7	Roller A		35	Lock Pin	2
8	Lock Nut M14	2	36	Screw M4× 10	4
9	Wheel	2	37	Lock Pin Base	2
10	Screw M6× 12	4	38	Spring A	2
11	Washer	2	39	Guide Bar	1
12	Main Shaft	2	40	Pulling Handle Base	2
13	Screw M8 × 50	4	41	Lock Nut M8	16
14	Cutter Base	1	42	Roller B	4
15	Screw M4 × 16	5	43	ABS Locker	3
16	Nylon Bar	1	44	Adjustable Supporting Bracket	1
17	Blade	1	45	Rear Extension Bracket	1
18	Screw M6 × 10	5	46	Screw M8 × 50	4
19	Blade Holder	1	47	Washer φ 8	12
20	Screw M8 × 14	2	48	Roller Shaft	4
21	Handle Stopper	1	49	Screw M8 × 45	4
22	Screw M8 × 10	2	50	Lock Pin	8
23	Screw M12 × 40	1	51	Pulling Handle	1
24	Shaft for Eccentric Bar	2	52	Working Stand Assembly	1
25	Nylon Cam Wheel	2	53	Screw M8 × 16	4
26	Aluminum Eccentric bar	1	54	Spring Washer φ 8	4
27	Handle Base	1	55	Wheel Base	2
28	Handle Lock Nut	2			