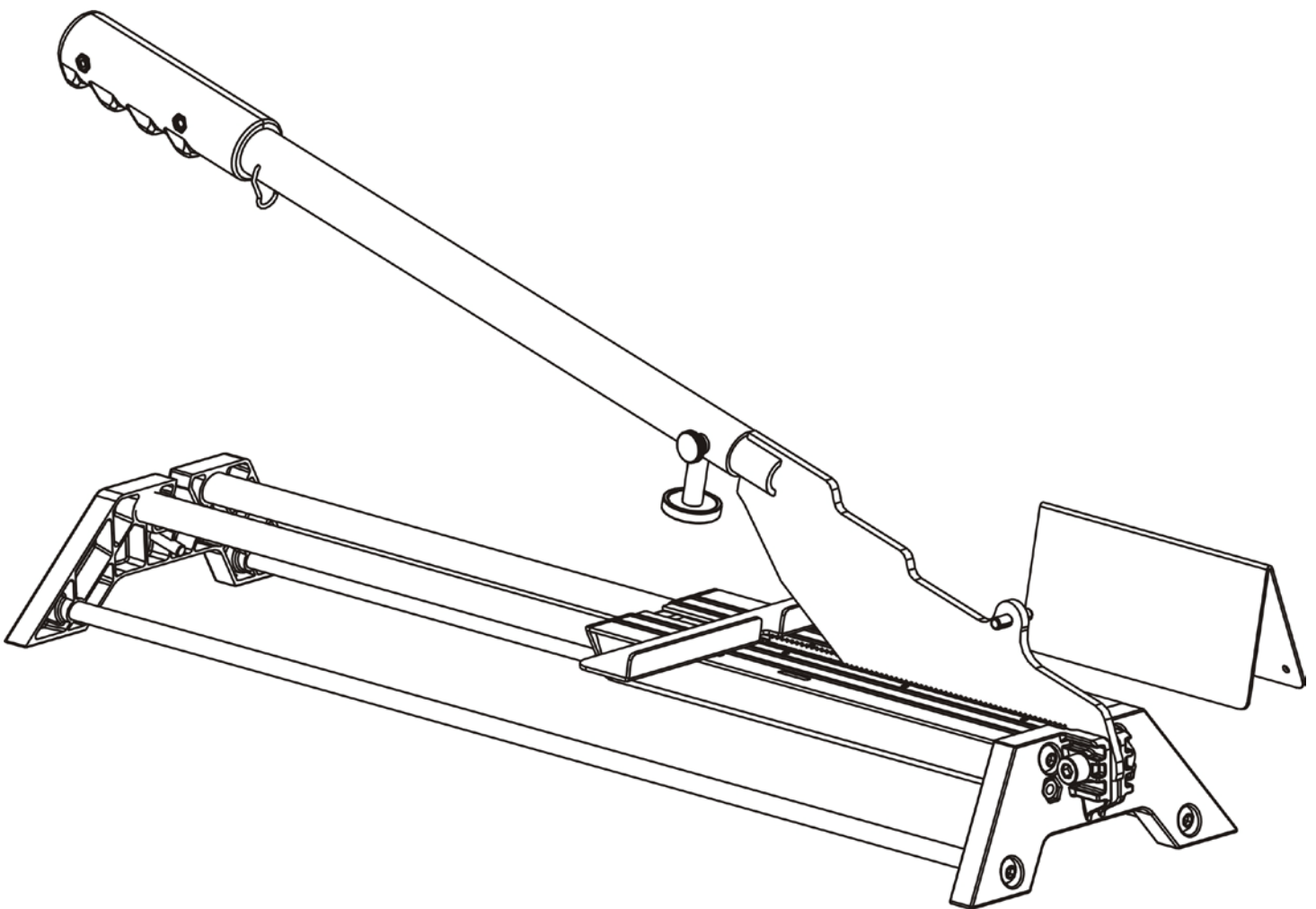


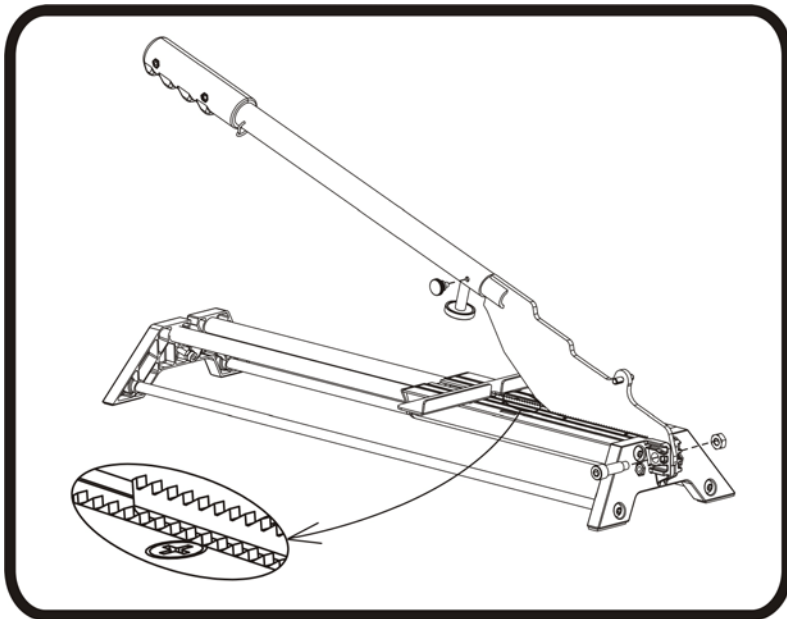
D-CUT[®]

OPERATION MANUAL

Laminate Cutter PL-215



www.dcutproducts.com

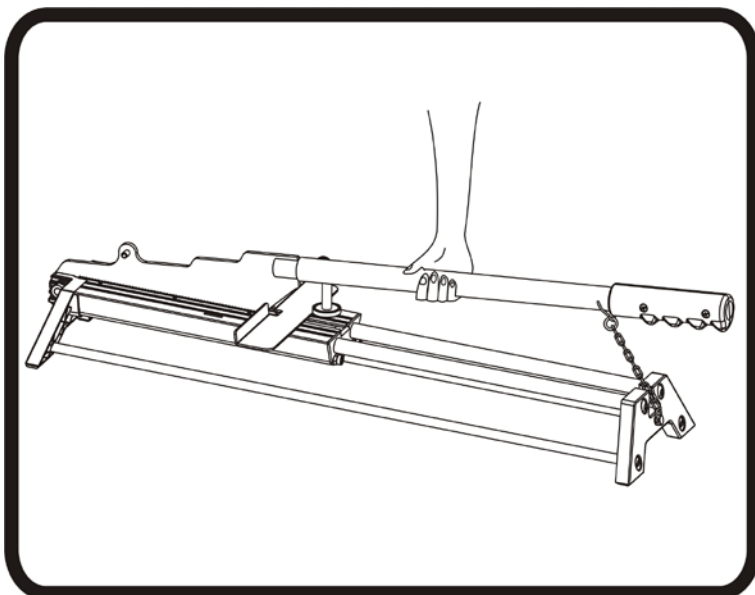


Assembly

Use the provided Allan wrench, screws, bolt and nuts to assemble the blade into the base and handle as shown.

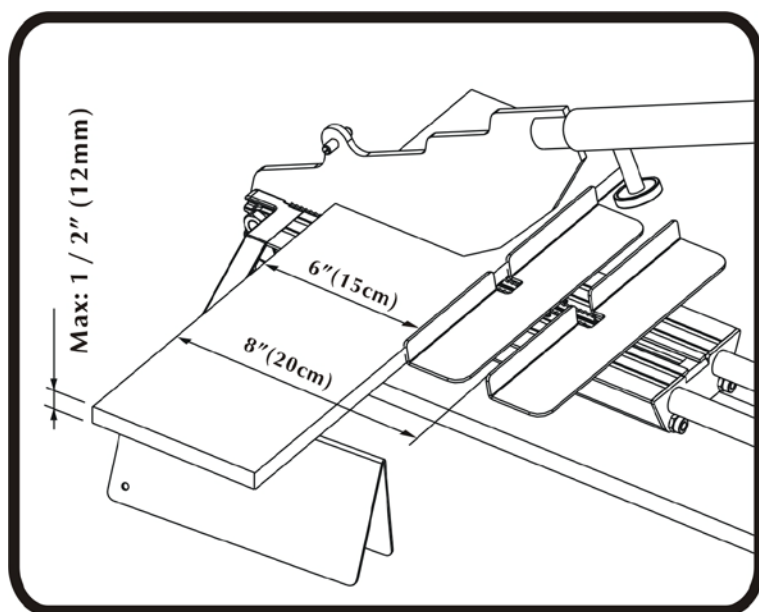
Warning:

Avoid contacting with the steel teeth along the cutting slot, which may cause injury.



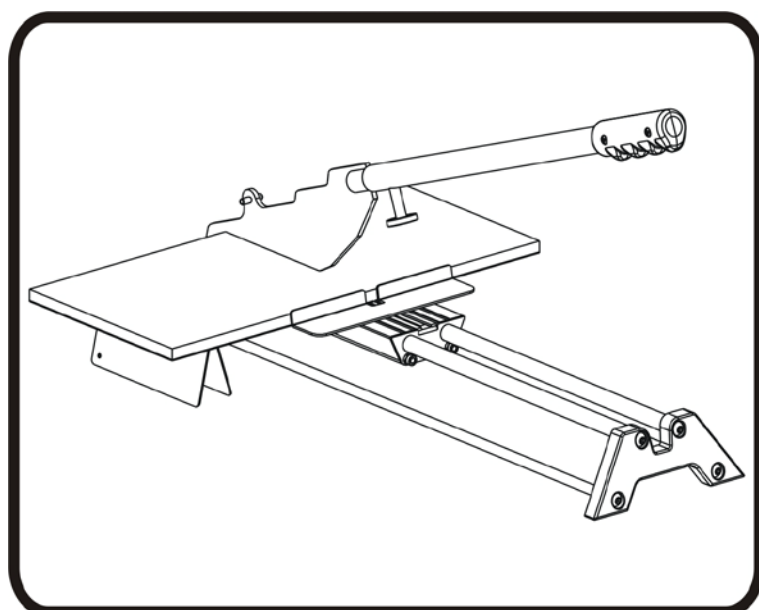
Carry

Hook the chain to the ring on the handle and carry the cutter as shown.



The Slot on the Cutter Base

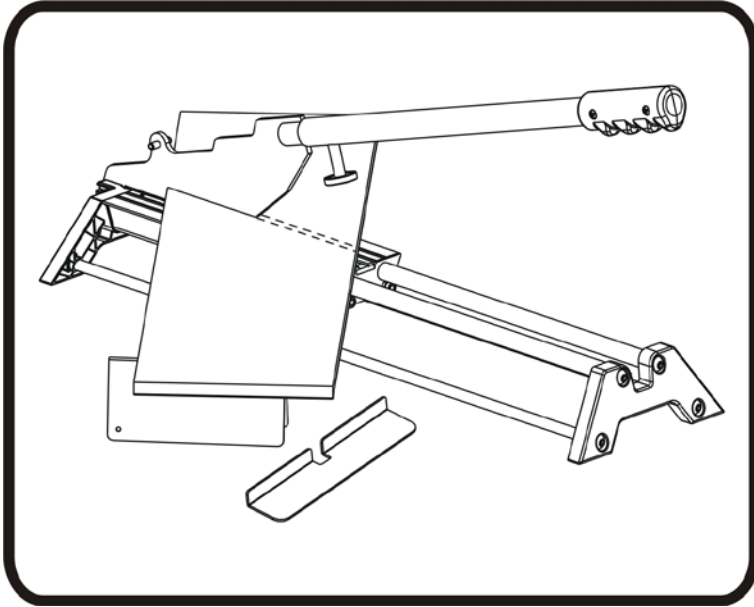
On the cutter base, there are a few sets of the slot used for the stopper attachment. Always use the slots closer to the pivot of the blade according to the width of the plank. The closer to the pivot of the blade, the more cutting power you will get.



Cross Cut

Place the flooring plank onto the cutter base and position the stopper in the appropriate slot at the required length. Then push down the blade by using the handle. The cutter is designed to cut through laminate pieces by removing a small amount of laminate.

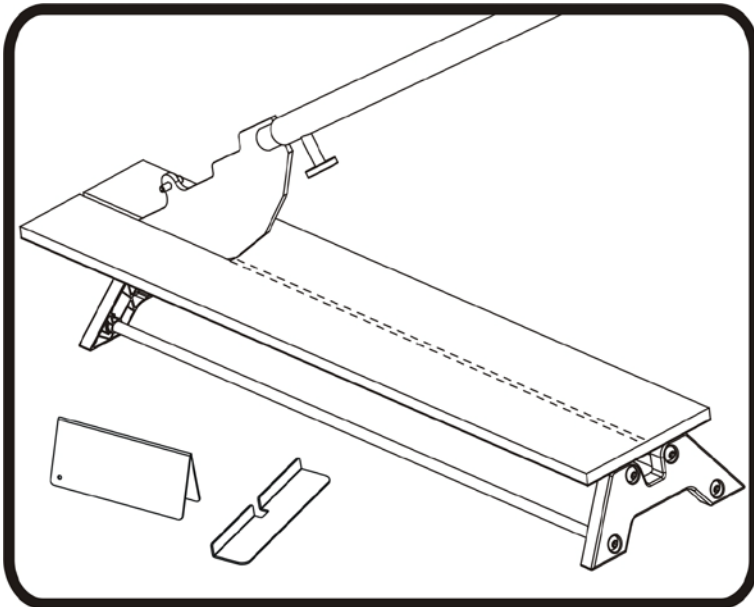
Please note that a slightly rough edge is normal. The cut edge will meet the wall and be covered by a molding (a base board or a quarter-round).



Free Angle Cut

Mark a line of the floor plank and remove the stopper attachment from the cutter base. Line up the blade with the line marked on the plank, then push down the blade by using the handle. The small teeth located along the cutting slot will keep the laminate plank from slipping.

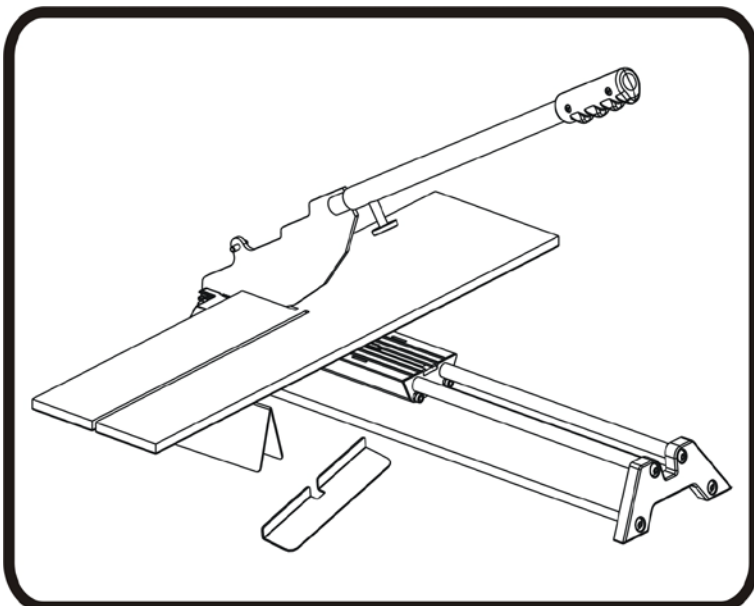
After making each cut pull the handle back up, the small pin featured on the blade helps to move the plank forward. Use your hand to push down the plank and then cut again. Repeat the procedure until the full length of the cut is completed.



Lengthwise Cut

When cutting laminate lengthwise, remove the stopper from the cutter base. Mark a line on the laminate plank and place it on the base. Hold it down firmly while pushing down the cutter blade. Small teeth located along the cutting slot will keep the laminate plank from slipping.

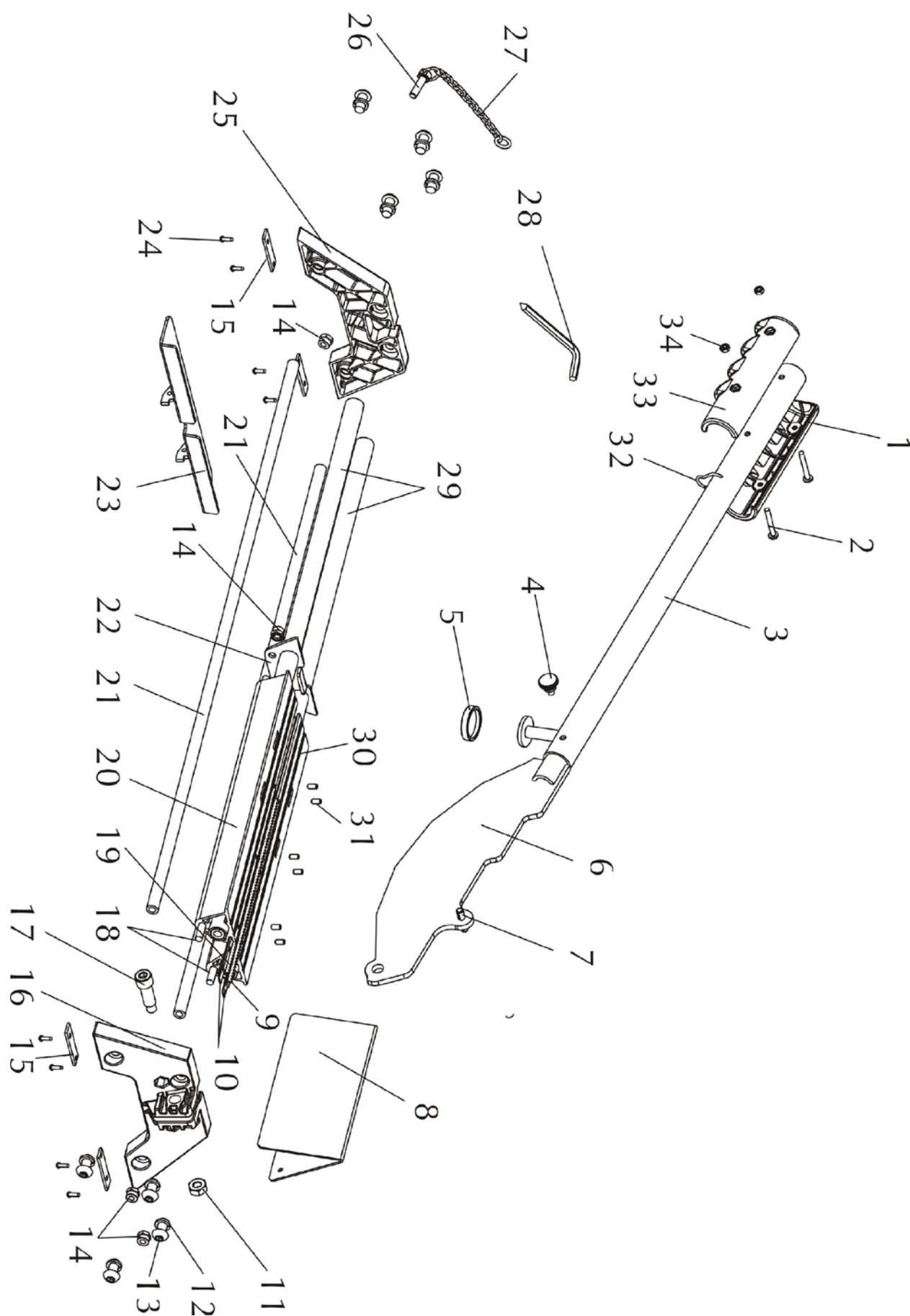
After making each cut pull the handle back up, the small pin featured on the blade helps to move the plank forward. Use your hand to push down the plank and then cut again. Repeat the procedure until the full length of the cut is completed.



"L" Cut

When making an "L" cut, it is recommended to cut the lengthwise first, following the "Lengthwise Cutting" procedure to cut plank to the required point and then re-position the plank, make a last cut "cut-out".

Part List



Part List

	Parts	Q'ty		Parts	Q'ty
1	Left ABS Handle	1	18	Supporting Bar C	2
2	Cross Head Screw M4 × 31	2	19	Right Steel Teeth	1
3	Handle	1	20	Right Working Table	1
4	Knurled Screw M5	1	21	Supporting Bar B	2
5	Rubber Pad	1	22	End Plate	1
6	Blade	1	23	Stopper Attachment	1
7	Spring Pin	1	24	Cross Head Screw M4 × 4	8
8	Supporting Stand	1	25	Rear Base	1
9	Left Steel Teeth	1	26	Customized Screw M6	1
10	Steel Teeth Washer	2	27	Chain	1
11	Nut M8	1	28	Allan Wrench M10	1
12	Spring Washer	8	29	Supporting Bar A	2
13	Hex Head Screw M8 × 16	8	30	Left Working Table	1
14	Lock Nut M6	5	31	Hex Head Screw M4 × 8	6
15	Foot Pad	4	32	Hook	1
16	Front Base	1	33	Right ABS Handle	1
17	Customized Screw M10	1	34	Nut M4	2