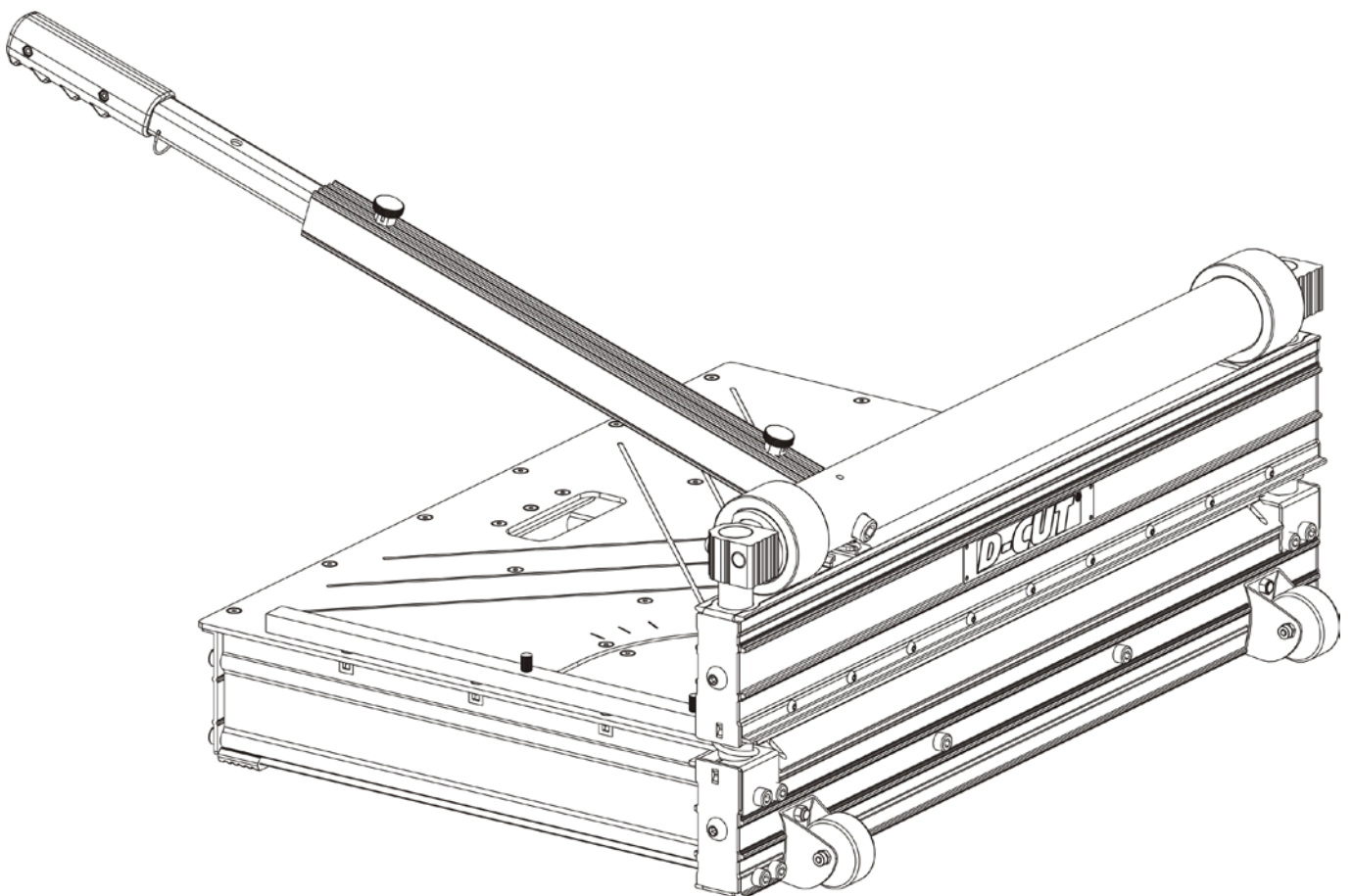


D-CUT[®]

OPERATION MANUAL

D-Cut Multi-Flooring Cutter MR-630





WARNING: FAILURE TO FOLLOW THESE RULES MAY RESULT IN SERIOUS INJURY! USING THIS MACHINE WITH RESPECT AND CAUTION WILL CONSIDERABLY LESSEN THE POSSIBILITY OF PERSONAL INJURY.

SAFETY RULES FOR THE FLOORING CUTTER

- 1. READ AND UNDERSTAND THIS INSTRUCTION MANUAL BEFORE OPERATING THE D-CUT MULTI-FLOORING CUTTERS.**
2. If you are not thoroughly familiar with the operation of D-Cut Multi-flooring Cutter, obtain advice from a qualified instructor or call 800-982-3434 USA
3. Stay alert. Do not operate while under the influence of drugs, alcohol, or medication.
4. Always wear safety approved eye protection with side shields(ANSI Z87.1)
5. Keep work area free of debris.
6. Keep children and unauthorized persons away from the D-Cut Multi-flooring Cutter and work area.
7. Make sure tool is secure. Operate only on a firm substrate or solid stand.
8. Use the right tool. Do not force the D-Cut Multi-flooring Cutter or use it for a job for which it was not designed; use only on approved materials.
9. Keep the blade sharp. A dull blade will not perform properly.
10. Always keep hands away from blade while operating or carrying the cutter.
11. Do not alter or misuse this tool. The D-Cut Multi-flooring Cutter is precision built; modifications not specified in this manual may result in a dangerous and unsafe environment.
12. Maintain the D-Cut Multi-flooring Cutter with care. Keep Blade sharp and clean. Follow instructions for changing accessories.
13. Use only recommended accessories. The use of improper accessories may be hazardous and cause injuries.
14. Never leave the D-Cut Multi-flooring Cutter unattended. Secure the handle with the lock chain when not in use.

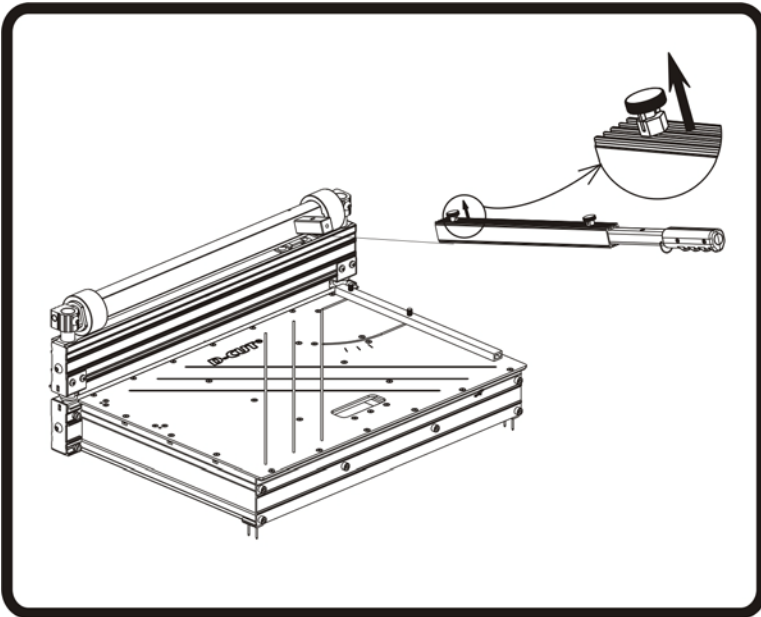


SET UP

Installation of the Cutter

Pull up the lock pin on the aluminum handle as shown and insert the handle into the handle base as shown.

Warning: Do not put your fingers against the sharp edge of the blade at any time.

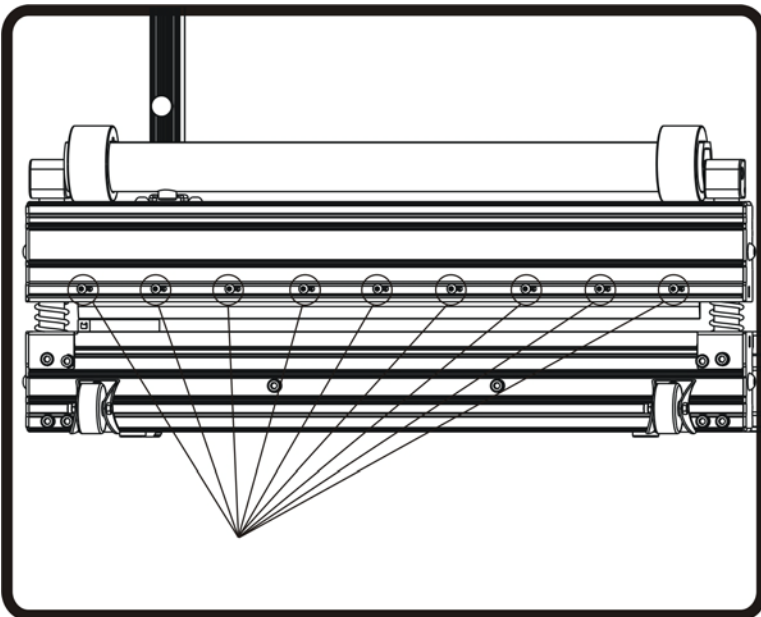


Changing the Blade

Use the provided Allan wrench to remove the nine screws, then hold the blade by each end and carefully remove the blade out of the blade holder.

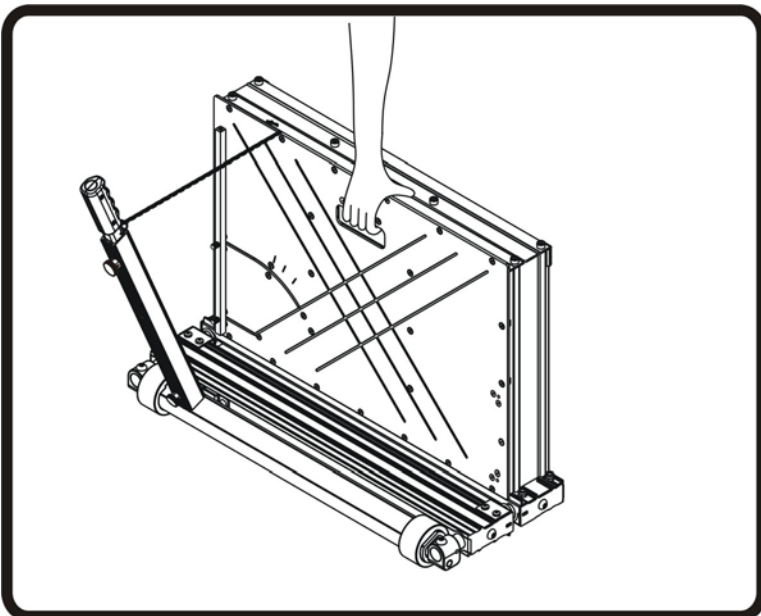
Note: The flat side of the blade faces the table.

Warning: Do not put your fingers against the sharp edge of the blade at any time.

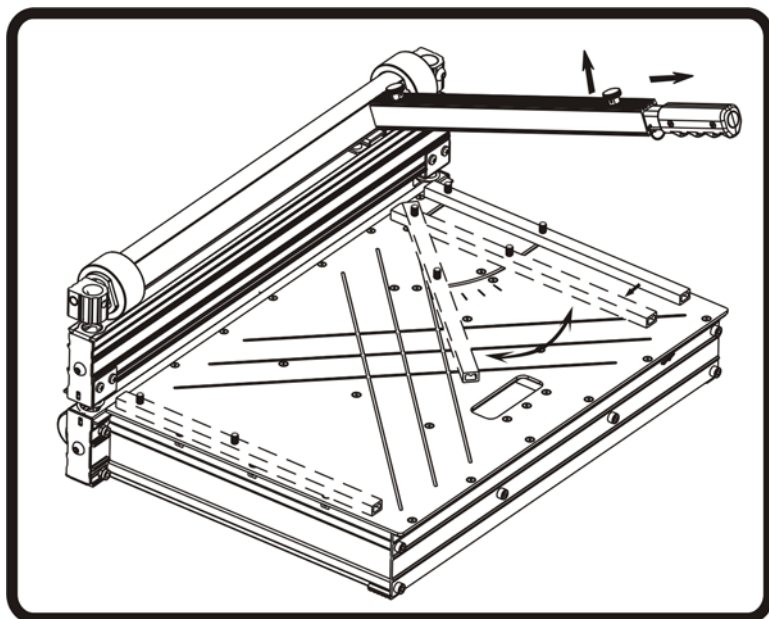


Carry

Hook the chain to the ring on the handle and carry the cutter as shown.



CUTTING

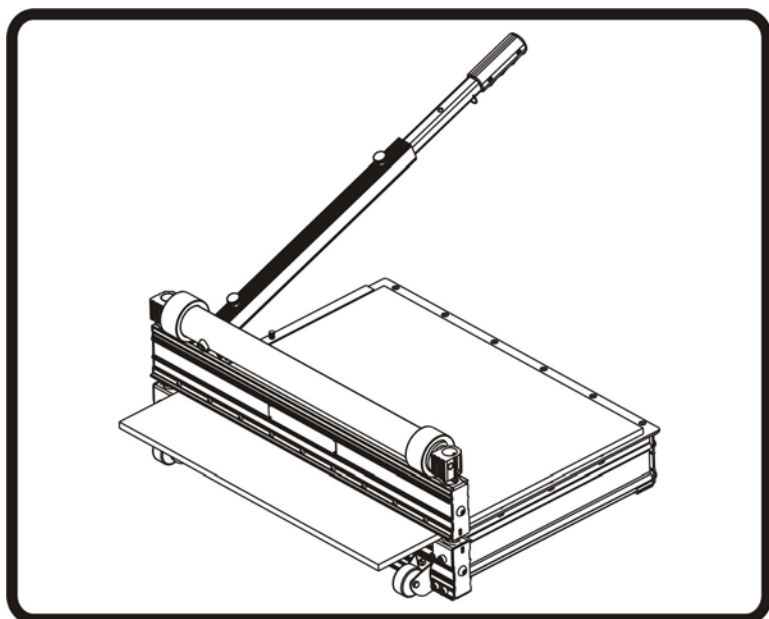


Cutting Preparation

Adjust the angle attachment as needed and pull the extension handle out as shown.

The angle attachment can be used on left side of the table as shown.

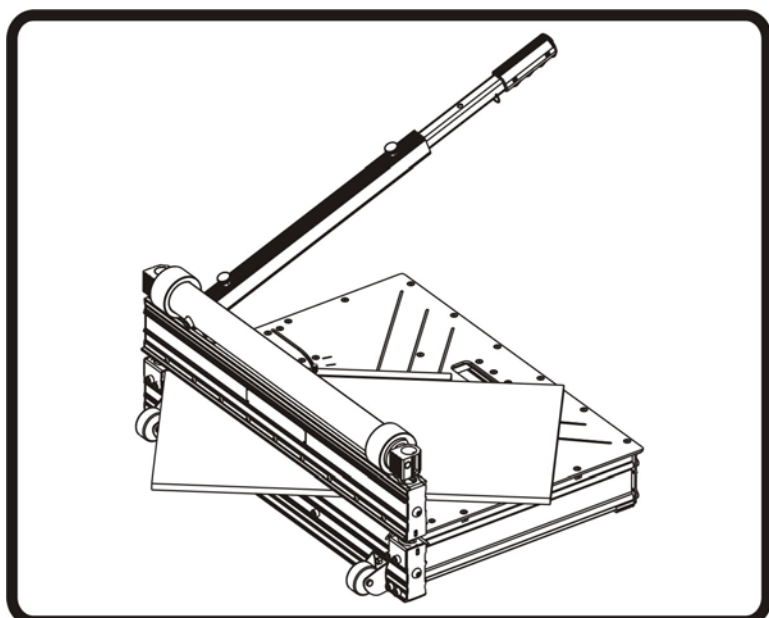
Warning: Do not put your fingers against the sharp edge of the blade at any time.



Straight Cutting

Insert material between the cutting blade and the base, flush with the angle attachment as shown and hold the material with foot then push handle down to complete a cut.

Warning: Maintain control of the handle. Do not allow handle to slam back after making a cut.

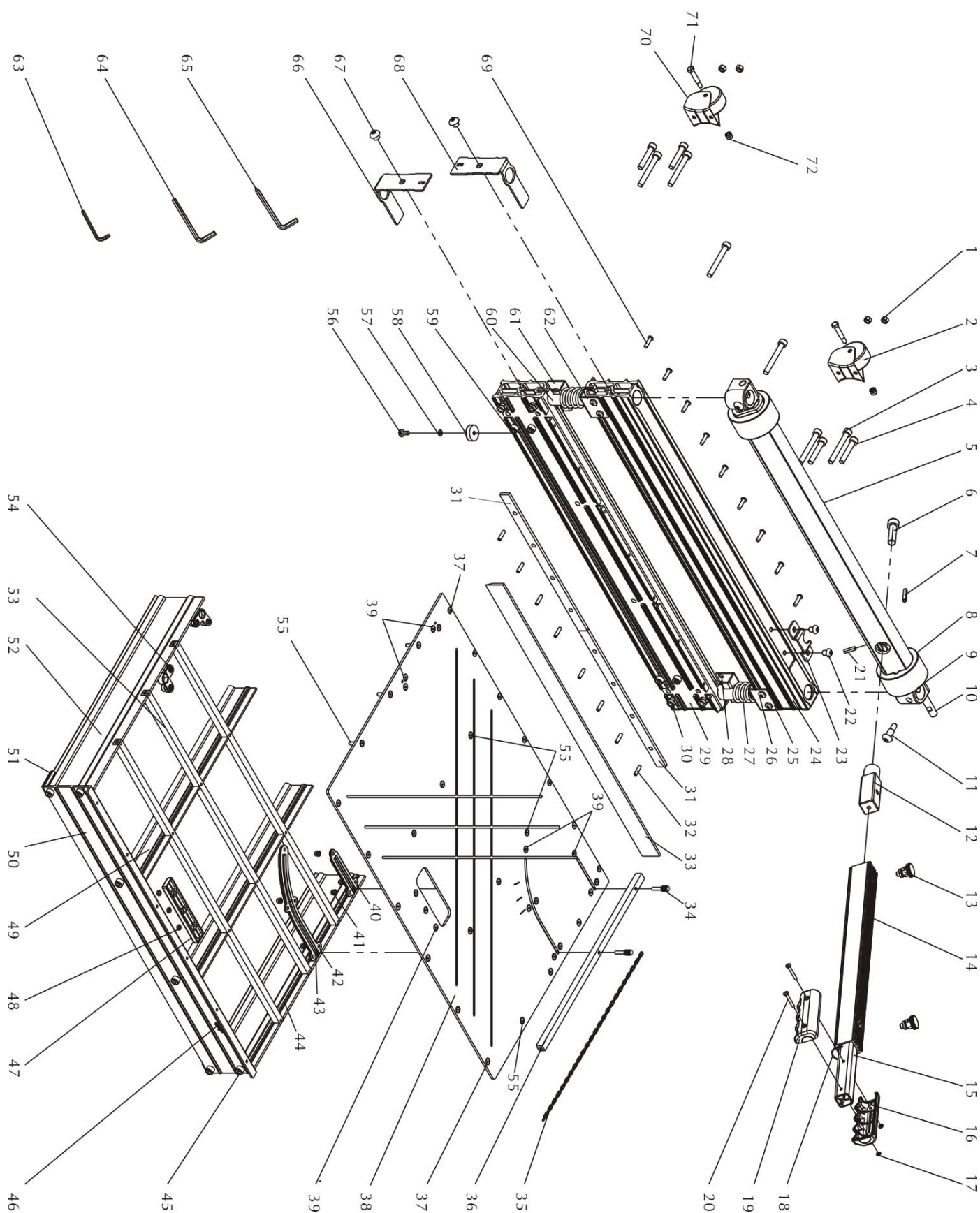


45° Cutting

Adjust the angle attachment to 45°. Insert material between the cutting blade and the base, against the angle attachment as shown, then push the handle down to complete a cut.

Warning: Maintain control of the handle. Do not allow handle to slam back after making a cut.

PART LIST





PART LIST

	Parts	Q'ty		Parts	Q'ty
1	Nut M6	4	37	Hex Head Screw M5 × 8	13
2	Ground Wheel	2	38	Working Table	1
3	Hex Head Bolt M8 × 65	6	39	Hex Head Screw M5 × 12	15
4	Hex Head Bolt M8 × 45	4	40	Nut Straight Locating Slot	1
5	Aluminum Eccentric Cam	1	41	Nylon Lock Nut M5	12
6	Hex Head Bolt M12 × 40	1	42	Nut Curve Locating Slot	1
7	Spring Pin Φ6 × 28	2	43	Hex Nut M5	4
8	Nylon Wheel	2	44	Working Table Frame B	1
9	Nylon Wheel Bracket	2	45	Hex Head Screw M8 × 8	4
10	Rotating Shaft	2	46	Hook B	1
11	Customized Bolt M10	2	47	Carrying Handle	1
12	Handle Base	1	48	Thin Nut M5	3
13	Pull Pin	2	49	Working Table Supporting	2
14	Handle-1	1	50	End Table Frame	1
15	Handle-2	1	51	Rubber Feet-1	2
16	Right ABS Handle	1	52	Working Table Frame A	1
17	Thin Nut M4	2	53	Cross Bar	3
18	Hook A	1	54	Nut Base	2
19	Left ABS Handle	1	55	Hex Head Screw M5 × 20	12
20	Cross Head Screw M4 × 31	2	56	Cross Head Screw M5 × 10	2
21	Hex Headless Screw M6 × 20	1	57	Plain Washer Φ5	2
22	Hex Head Screw M8 × 10	2	58	Rubber Feet-2	2
23	Handle Stopper	1	59	Hex Head Screw M6 × 45	4
24	Blade Holder	1	60	Guide Rod	2
25	Top Spring Supporting B	1	61	Button Spring Supporting A	1
26	Cross Head Screw M6 × 10	4	62	Top Spring Supporting A	1
27	Spring	2	63	Allan Wrench M5	1
28	Button Spring Supporting B	1	64	Allan Wrench M6	1
29	Blade Cutting Base	1	65	Allan Wrench M8	1
30	Nylon Lock Nut M8	4	66	Aluminum End Board B	2
31	Nylon Bar	2	67	Hex Head Screw M10 × 8	4
32	Hex Headless Screw M5 × 20	8	68	Aluminum End Board A	2
33	Blade	1	69	Hex Head Screw M6 × 20	9
34	Knurled Pin M5	2	70	Ground Wheel Base	2
35	Chain	1	71	Hex Head Screw M6 × 35	2
36	Cutting Guide	1	72	Nylon Lock Nut M6	2