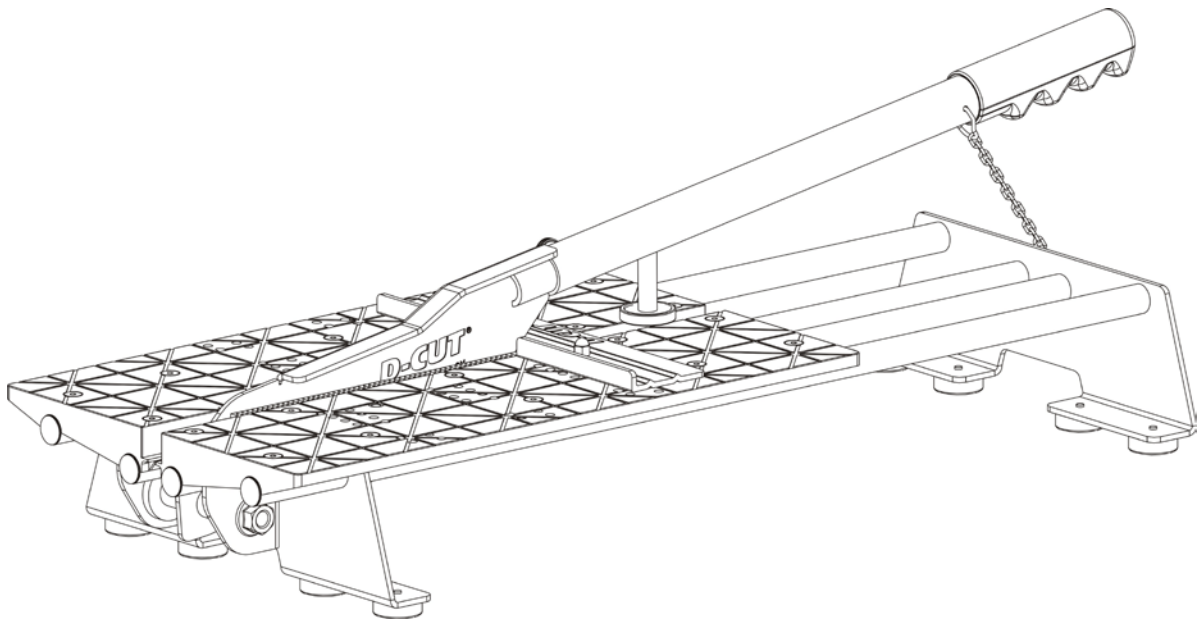


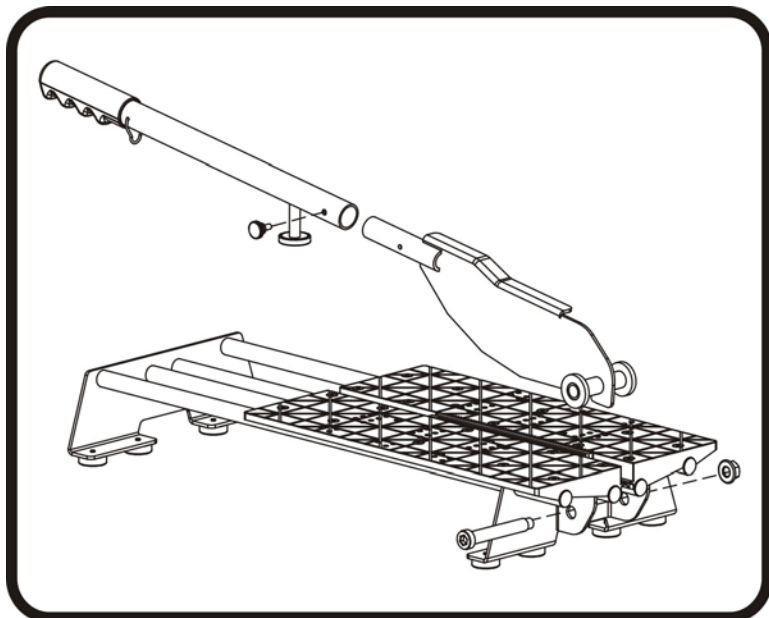
D-CUT[®]

OPERATION MANUAL

Vinyl / LVP Flooring Cutter LT-180



www.dcutproducts.com



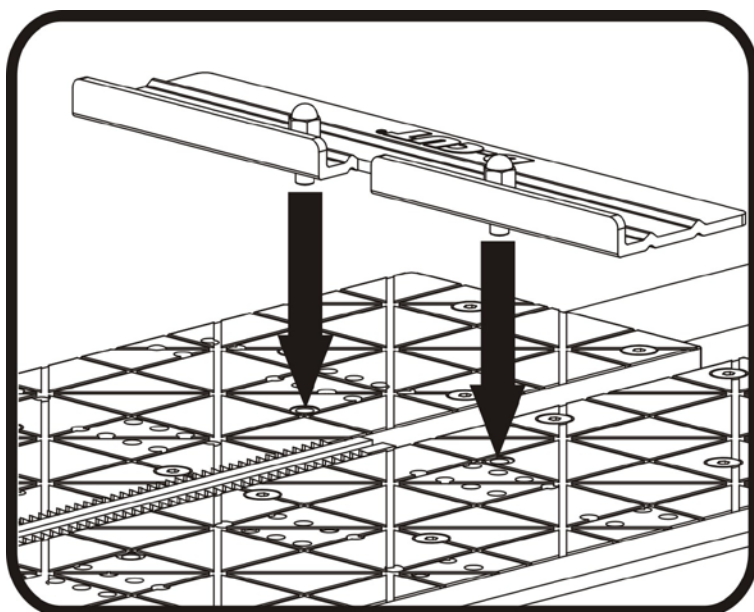
Assembly of the Cutter

Use provided Allan wrench, screws, nuts and bolts to assemble:

1. Blade onto the base
2. Handle

Warning:

Avoid contact with the steel teeth along the cutting slot, which may cause injury.

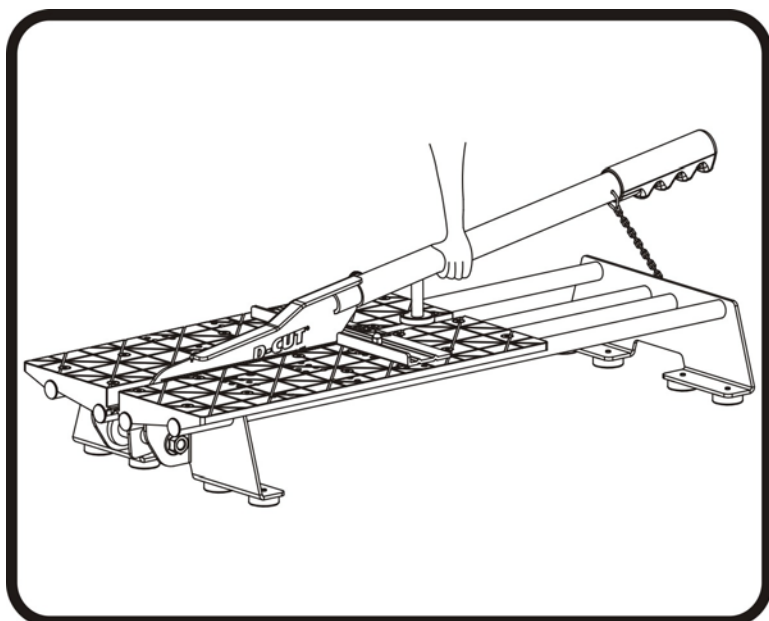


Installation of the Stopper

Insert the stopper attachment into two metal holes as shown.

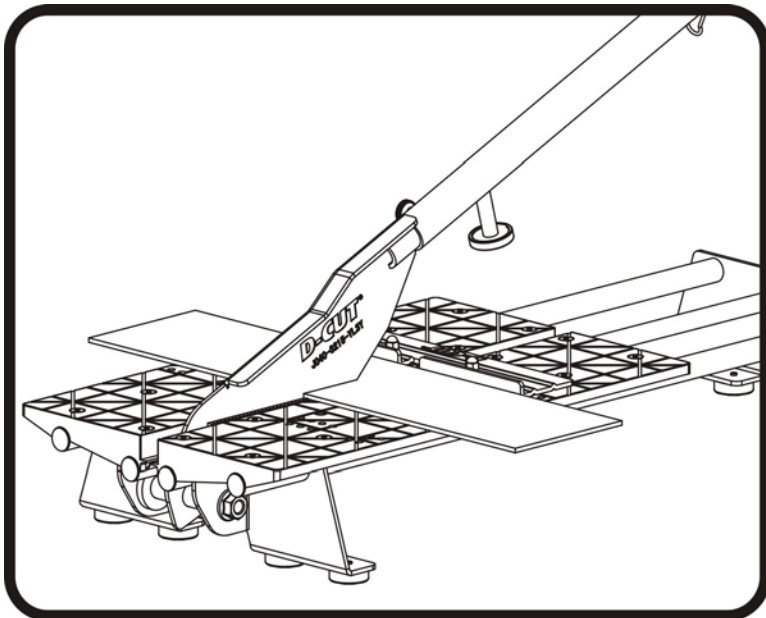
Warning:

Avoid contact with the steel teeth along the cutting slot, which may cause injury.



Transportation and storage

Hook the chain to the ring on the handle and carry the cutter as shown.

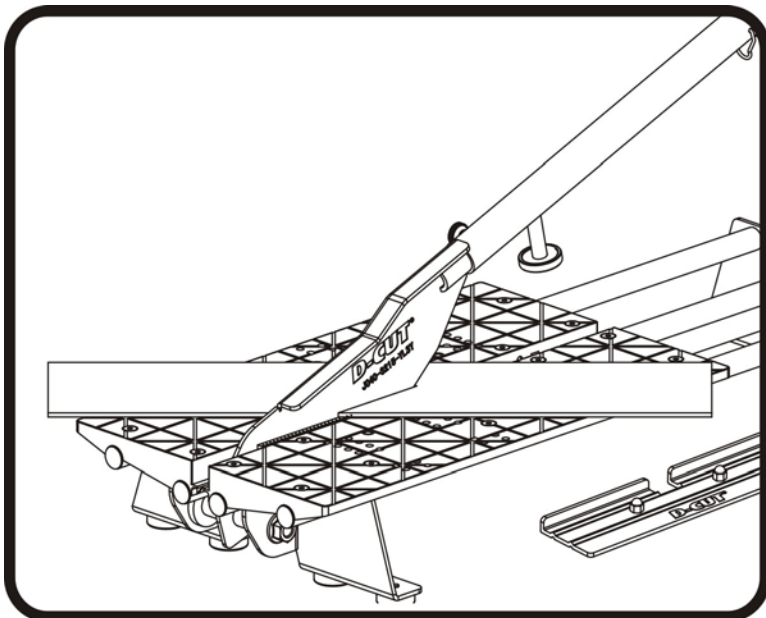


Square Cut

Insert the material between the cutting blade and the stopper, flush with the stopper attachment as shown and hold the material then push handle down to complete the cut.

Warning:

Avoid contact with the steel teeth along the cutting slot, which may cause injury.

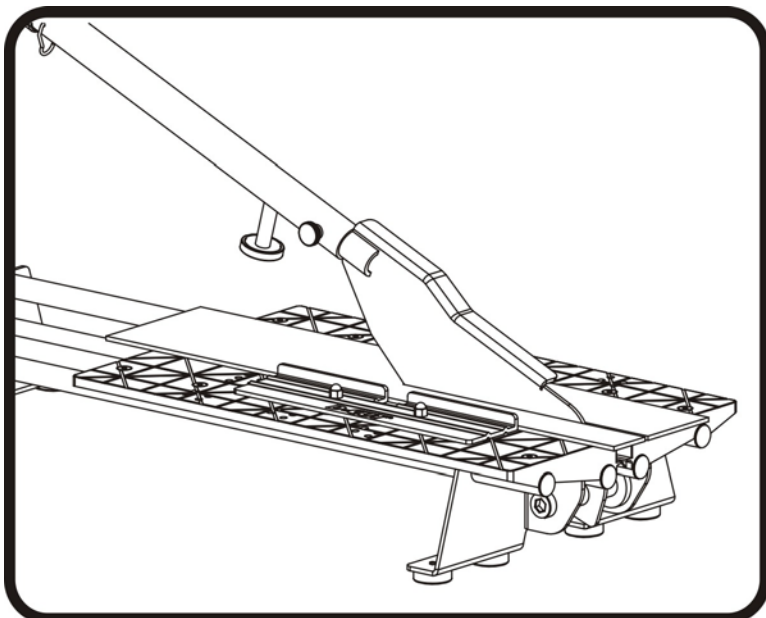


Free Angle Cut

Remove the stopper attachment from the cutting table. Place the material on the table as shown, follow the line that you draw on the material, then push the handle down to complete the cut.

Warning:

Avoid contact with the steel teeth along the cutting slot, which may cause injury.



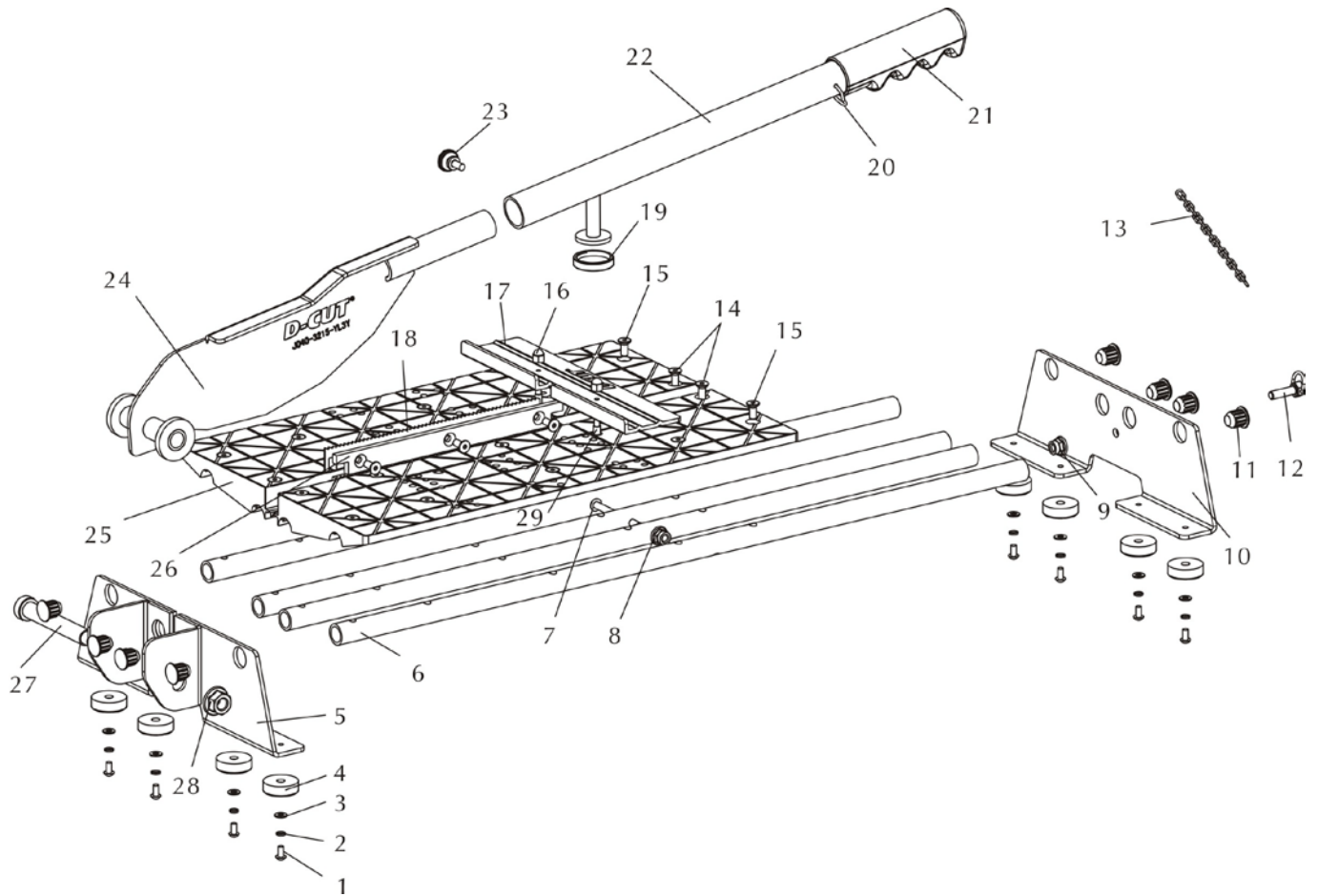
Lengthwise Cut

Find two holes on the table that meet your requirement of the width you want to cut, insert the stopper attachment into the holes. Place the material on the table flush against the stopper attachment as shown, then push the handle down to complete the cut.

Warning:

Avoid contact with the steel teeth along the cutting slot, which may cause injury.

Part List



	Parts	Q'ty		Parts	Q'ty
1	Hex Screw M5 × 8	8	16	Head Nut M4	2
2	Spring Washer Φ 5	8	17	Stopper Attachment	1
3	Washer Φ 5	8	18	Steel Tooth	2
4	Rubber Feet	8	19	Rubber Pad	1
5	Front Base	1	20	Hook	1
6	Cross Bar	4	21	PVC Handle	1
7	Screw M5 × 55	1	22	Handle	2
8	Nut M5	1	23	Knurled thumb Screw M5 × 10	1
9	Flange nut M6	1	24	Blade	1
10	Rear Base	1	25	Working Table	2
11	Cross Bar End	8	26	Steel tooth Holder	2
12	Bolt M6	1	27	Shaft Shoulder Bolt M12	1
13	Chain	1	28	Flange Nut M10	1
14	Hex Screw M5 × 20	10	29	Position Pin	2
15	Hex Screw M5 × 12	16			